

PART OF THE S.E. 1/4, SEC. 23, AND THE S.W. 1/4, SEC. 24, T.5N., R.1W., S.L.B. & M.

452

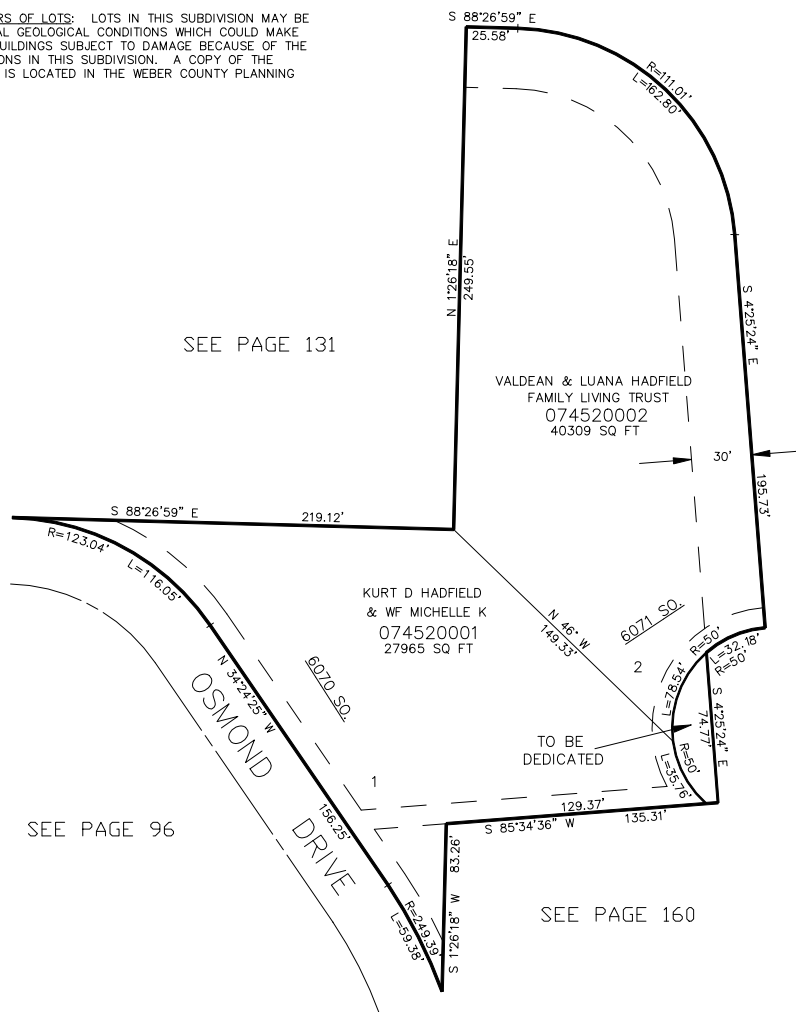
WILLOW BEND SUBDIVISION

IN WEBER COUNTY

TAXING UNIT: 159

SCALE 1" = 50'

NOTE TO PURCHASERS OF LOTS: LOTS IN THIS SUBDIVISION MAY BE SUBJECT TO UNUSUAL GEOLOGICAL CONDITIONS WHICH COULD MAKE CONSTRUCTION OF BUILDINGS SUBJECT TO DAMAGE BECAUSE OF THE GEOLOGICAL CONDITIONS IN THIS SUBDIVISION. A COPY OF THE GEOLOGICAL REPORT IS LOCATED IN THE WEBER COUNTY PLANNING OFFICE.



SEE PAGE 131

SEE PAGE 99

SEE PAGE 96

SEE PAGE 160

10' UTILITY & DRAINAGE EASEMENTS EACH SIDE OF PROPERTY LINES AS INDICATED BY DASHED LINES EXCEPT AS OTHERWISE SHOWN.

FOR COMPLETE ENG DATA SEE ORIGINAL DEDICATION PLAT IN BOOK 38, PAGE 34 OF RECORDS.